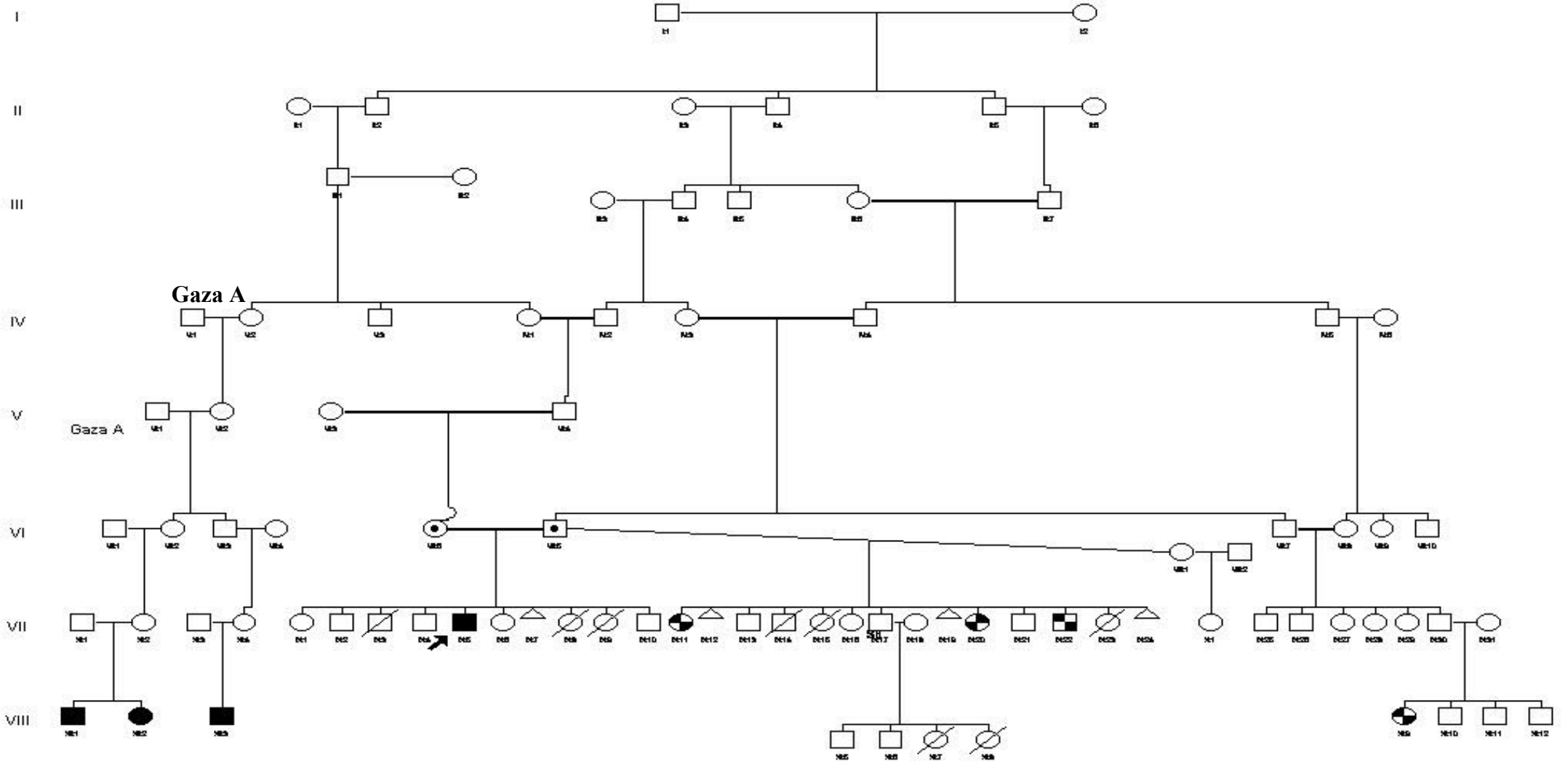






Gaza C



- IX
-  affected
 -  nyctalopia (Unexamined)
 -  infancy < 5 death
 -  stillbirth

Gaza C Family with Cone-rod dystrophy and amelogenesis imperfecta (Jalili syndrome) type A.
 (showing marriages with Gaza A but no direct link found to Gaza C singleton)

[Click here for jpeg vesion](#)